

## Drives for high-floor light rail vehicles

Series DKCBZ, air cooled, surface cooling, IP55



DKCBZ 0212-4, 125 kW, 1,775 r.p.m.



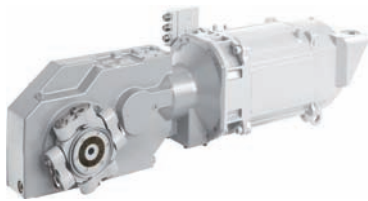
DKCBZ 0209-4, 80 kW, 1,778 r.p.m.



## Drives for low-floor light rail vehicles

Longitudinal drive for 100% low-floor

Series DKCBZ, air cooled, surface cooling, IP55



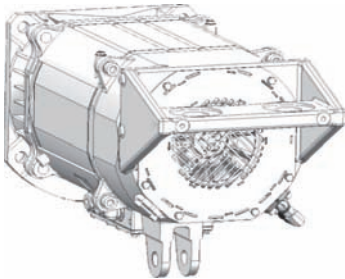
DKCBZ 0211-4, 105 kW, 1,777 r.p.m.



## Drives for low-floor light rail vehicles

Longitudinal drive for 100% low-floor · cross drive for 70% low-floor

Series DKCBZ, air cooled, surface cooling, IP55



DKCBZ 1509-4, 65 kW, 1,919 r.p.m.



DKCBZ 0210-4, 85 kW, 1,779 r.p.m.



DKCBZ 0210-4, 85 kW, 1,944 r.p.m.

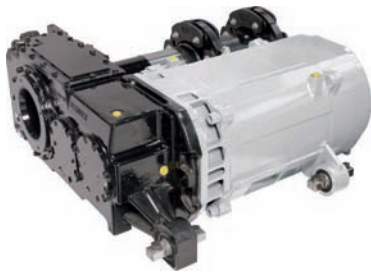


DKCBZ 0210-4, 85 kW, 1,779 r.p.m.

## Drives for low-floor light rail vehicles

Longitudinal drive for 100% low-floor · cross drive for 70% low-floor

Series DKCBZ, air cooled, surface cooling, IP55



DKCBZ 0211-4, 105 kW, 1,777 r.p.m.



DKCBZ 0211-4, 105 kW, 1,777 r.p.m.





## Drives for low-floor light rail vehicles

Longitudinal drive for 100% low-floor

Series DKCBZ, air cooled, surface cooling, IP55



DKCBZ 0211-4, 105 kW, 1,777 r.p.m.



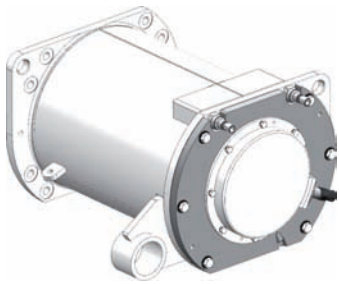
DKCBZ 0211-4, 105 kW, 1,777 r.p.m.



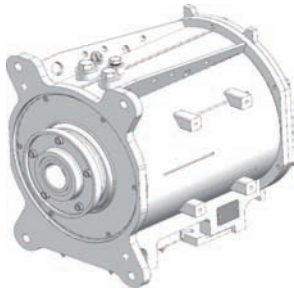
## Drives for low-floor light rail vehicles

Longitudinal drive for 100% low-floor · cross drive for 70% low-floor

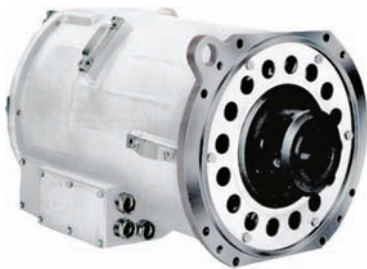
Series DKWBZ, water-jacket cooling, IP55



DKWBZ 0209-4, 100 kW, 2,380 r.p.m.



DKWBZ 1606-4, 50 kW, 2,653 r.p.m.



DKWBZ 1706-4, 95 kW, 2,004 r.p.m.



DKWBZ 0309-4, 100 kW, 2,680 r.p.m.



## Drives for low-floor suburban rail cars and metros

Series DKOBZ, air cooled, surface cooling, IP55



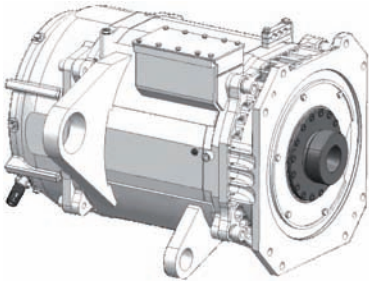
DKOBZ 0610-4, 130 kW, 1,775 r.p.m.



DKOBZ 0610-4, 1.8 kV, 125 kW, 1,776 r.p.m.

## Drives for low-floor suburban rail cars and metros

Series DKOBZ, air cooled, surface cooling, IP55



DKOBZ 0610-4, 130 kW, 1,775 r.p.m.



DKOBZ 0610-4, 130 kW, 1,781 r.p.m.



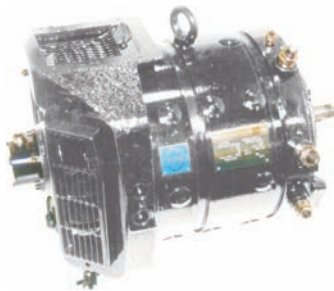
DKOBZ 0610-4, 145 kW, 1,987 r.p.m.





## Drives for suburban rail cars, special purpose vehicles and solutions for modernisation

Series DKABZ, air cooled, surface cooling, IP22



DKABZ 0305-4, 42 kW, 1,750 r.p.m.



DKABZ 0305-4, 65 kW, 2,016 r.p.m.

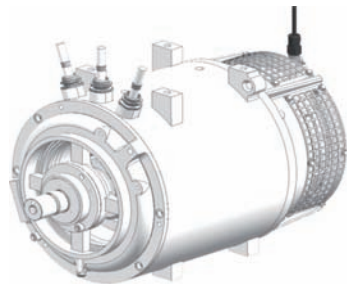


## Drives for suburban rail cars, special purpose vehicles and solutions for modernisation

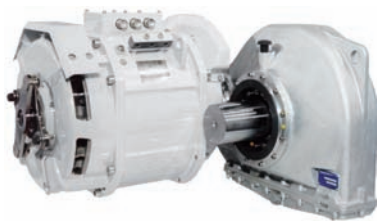
Series DKABZ, air cooled, drought ventilated, IP22



DKABZ 0306-4, 68 kW, 1,919 r.p.m.



DKABZ 0307-4, 50 kW, 1,306 r.p.m.



DKABZ 2806-4, 100 kW, 1,137 r.p.m.



## Drives for monorails

Series DKVBZ, air cooled, foreign ventilated, IP54



DKVBZ 0211-4, 95 kW, 1,781 r.p.m.



## Drives for electric regional and IR multiple units (EMU)

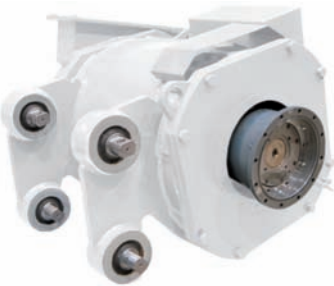
Series DKLBZ, air cooled, foreign ventilated, IP22



DKLBZ 0910-4, 280 kW, 1,647 r.p.m.



DKLBZ 0910-4, (3 kV) 280 kW, 1,774 r.p.m.



DKLBZ 0911-4, 340 kW, 2,008 r.p.m.



## Drives for electric regional and IR multiple units (EMU)

Series DKLBZ, air cooled, foreign ventilated, IP22



DKLBZ 0911-4, 340 kW, 1,963 r.p.m.



DKLBZ 3112-4, (3 kV) 500 kW, 1,681 r.p.m.



## Drives for diesel-electric regional multiple units (DEMU)

Series DKABZ, air cooled, drought ventilated, IP22



DKABZ 0909-4, 110 kW, 818 r.p.m.





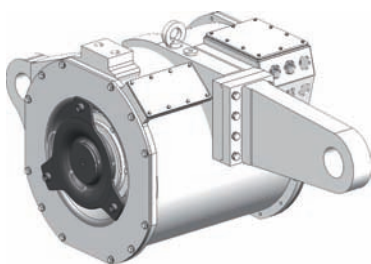
## Drives for locomotives and rail maintenance vehicles



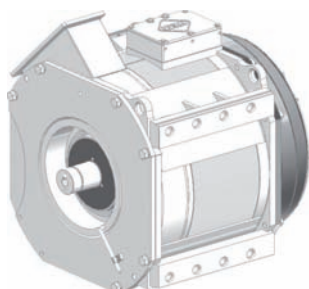
ECFB 1110-127C, 850 kW, 1,310 r.p.m.



DKLBZ 3510-4, 400 kW, 865 r.p.m.



DKWBZ 3514-6, 600 kW, 1,592 r.p.m.

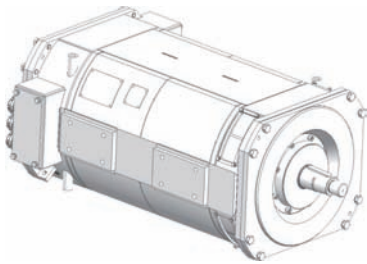


DKWBZ 3509-4, 355 kW, 918 r.p.m.



## Drives for trolley busses and hybrid busses

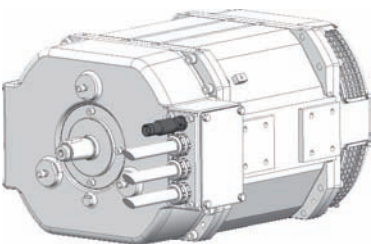
Series DKLBZ, air cooled, drought ventilated, IP22



DKLBZ 0315-4, 180 kW, 1,480 r.p.m.



DKLBZ 0315-4, 240 kW, 1,467 r.p.m.



DKLBZ 0309-4, 160 kW, 1,466 r.p.m.

